



# REGENT HILL INTERNATIONAL PRIMARY SCHOOL

## PROSPECTUS



2026

# MOCHUDI



CAMBRIDGE ASSESSMENT  
INTERNATIONAL EDUCATION

Plot 3021 BOSEJA WARD 

+267 575 00 85/+267 73 613 728 

enquiry.mochudi@rhis.ac.bw 

www.rhis.ac.bw 

# ABOUT THE SCHOOL

## GENERAL INFORMATION

We are a multi-faith school, with respect for all religions, in keeping with the Botswana PSLE Curriculum and Vision 2036: "By 2036 Botswana will be a moral, tolerant and inclusive society that provides opportunities for all."

Regent Hill International Primary School Mochudi Campus opened for boys and girls from Standard 1 to Standard 6 in May 2023 and for Standard 7 in January 2024. This school is the fifth and newest campus of the Regent Hill International Schools Group. Other Regent Hill campuses are located in Tlokweng, Gaborone, Metsimothabe and Molepolole. We follow both the Botswana Examinations Council Primary School Leavers Examination (PSLE) and the Cambridge International curricula.

A Secondary block is under construction in Mochudi and is planned to open in Term 2 2026. Secondary students are encouraged to attend lessons in Block 9 while awaiting the opening of the Secondary block on our campus. Free transport to and from Block 9 will be provided. Registration is done in Mochudi Campus.

## Message from Principals's Desk

First, let me extend a warm welcome to all who have an interest in our new school and to the Bakgatla people, Dumelang Bo Kgabo!

Not a man given to making long speeches, let me get to the main points of the vision/dream for this school.

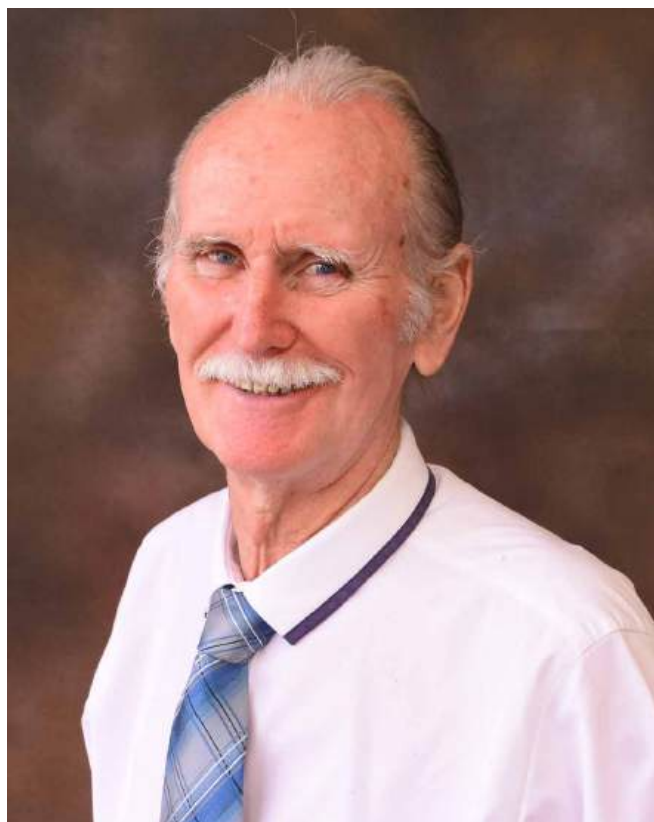
We believe education should effectively encompass four aspects of development.

- The first and most basic is the physical, including safety, comfort, health and physical development.
- Next comes the teaching of academic and cultural skills and knowledge, often seen as the primary purpose of education.
- Of greater importance, however, is the cultivation of good character, based on our Moral and Character Development Programme, which is incorporated into every aspect of school life.
- Of supreme importance is spiritual development, compatible with our multi-faith ethos.

We also aim to be a serious contributor to UNITY BUILDING in the Kgatleng area.

God willing and with your support, we will succeed!

Philip Huebsch (Most people call me Mr Philip) My surname is of German origin, ka Setswana, "Montle"



Mr Philip Huebsch-Principal of Mochudi campus



Ms Janice Kaleng -Vice Principal of Mochudi campus

# VALUES

## MOTTO

Every child is potentially the light of the world

## MISSION

To develop an inclusive school providing a happy, caring, safe and stimulating environment by combining best features of local and international curricula.

To sustainably foster a modern school environment where children, initiate, explore, develop and take responsibility for their learning through creativity, excellence and integrity.

## VISION

To nurture growing numbers of capable and distinguished young women and men who are contributing to the betterment and progress of society through their talents, intellectual excellence and most importantly, their moral steadfastness.

## AIMS

To fulfil the school vision, each child will be helped to develop as an individual contributor to society, to the economy and the environment at large.

To develop in each child the following skills:

- o Reading and writing
- o Communication
- o Research
- o Using mathematics and science
- o Using ICT
- o Thinking skills
- o Managing information problem solving and decision making, creative thinking, working with others and self-management.

To foster the following Attitudes and values

- o Personal responsibility
- o Self confidence
- o Tolerance and respect for others
- o Commitment, determination and resourcefulness
- o Community spirit
- o Integrity
- o Independence
- o Honesty
- o Openness to new ideas

Ultimately to provide a stimulating, relevant and enriching learning experience with equality of access for each child, within the limitations of what the school has capacity to provide, so they can develop an enthusiasm for learning as a lifelong process.



# HEALTH & SAFETY



## HEALTH AND SAFETY

The health (emotional and physical) and safety of children and staff are a top priority. Cleanliness is also a high priority. We have a fulltime SHE Officer to take care of our staff and students. Our Physical education coaches are qualified in First Aid and have many years' experience in dealing with emergencies. We have a Child Welfare Policy, separate from this Prospectus.

## ILLNESS/ACCIDENTS AT SCHOOL

When a child is sick or injured while at the school, in the first case, attempts will be made to contact the parent/guardian with the view to asking them to come to school. Please provide alternative contact numbers on the registration form, in case the parent/guardian is not available when called. If this is not possible, if we can't reach the parent and we deem the case to be an emergency, we have a clinic in Boseja South, near to where the school is located. In all cases, it is the school policy to act in the best interests of the child.

## ADMISSION CRITERIA

**Standard 1:** From 5 going on 6 years of age by end of July and having undergone preschool learning would be an advantage.

**Standard 2 – 6:** A written interview in Mathematics and English. If a pupil gets overall of 60% he/she will be admitted into the class applied for, but if below 60%, will be required to repeat the class from which they are coming. If the child has repeated before and is too old for the lower standard a conditional admission agreement may be negotiated.

We have an inclusive policy and have enrolled children with special needs, such as autism, dyslexia and ADHD, some of whom are assisted by facilitators who are employed by parents. The school Principal is a qualified and experienced Special Needs consultant. Parents/guardians must disclose any disabilities of their children at the time of registration.

## VISITING THE SCHOOL

We consider the involvement of parents in the education of their children as critically important and to this end we inform parents as fully as possible about their children's progress. Parents and pupils are welcome to view the premises. Please visit the Reception Office for guided tours and general enquiries.

## PARENT ACCEPTANCE OF VISION, AIMS, PHILOSOPHY, STANDARDS & POLICIES

By applying to Regent Hill International Primary School, parents have indicated a preference for this school, signifying acceptance of its vision, aims, philosophy, standards and policies, as detailed in our Prospectus, available from Reception, that needs to be read, prior to Registration Form being completed and signed. All registrations are done on Edana. Our Admin staff will assist with this process. Before submitting the Registration Form on Edana the terms and conditions need to be read before clicking on the green tick for submission.





# ABOUT THE SCHOOL

## CONSULTATIONS

To avoid disturbances during contact / lesson times, all meetings with the class teacher need to be by appointment.

A note in the diary can be the means of requesting an interview.

Class teachers also set up WhatsApp groups for communication with parents.

Engaging the class teacher at the classroom door at drop off time is not an appropriate time for a consultation, because at that time the full attention of the teacher needs to be on settling all the children in the class for the start of lessons

The same applies at the time when children are being prepared for dismissal by the teachers at end of the day. When an appointment is agreed to at a mutually suitable time, the teacher can give their full attention to the parent/guardian.

Parents will also be invited to take part in various fun and team building school activities such as concerts, sport days, consultations and award ceremonies.

We aim at cultivating a family-like relationship with parents.

The school is organised in two sections

1. **Lower Primary:** Standards 1, 2 and 3.
2. **Upper Primary:** Standards 4, 5, 6 and 7

As part of the curriculum pupils are taught the following subjects:

1. English Language and literacy
2. Setswana Language and literacy
3. Mathematics and Numeracy
4. Science
5. Social Studies/Cultural Studies
6. Religious and Moral Education (STD 5 to 7)
7. Agriculture (STD 5 to 7)
8. I.C.T
9. Art and Design
10. Music
11. Physical Education
12. French
13. Guidance and Counselling
14. Moral Character Development Programme

# VIRTUES

**Assertivness**

**Caring**

**Cleanliness**

**Commitment**

**Compassion**

**Confidence**

**Consideration**

**Cooperation**

**Courage**

**Courtesy**

**Creativity**

**Detachment**

**Diligence**

**Enthusiasm**

**Excellence**

**Flexibility**

**Forgiveness**

**Friendliness**

**Generosity**

**Gentleness**

**Helpfulness**

**Honesty**

**Honor**

**Humility**

**Idealism**

**Integrity**

**Joyfulness**

**Justice**

**Kindness**

**Love**

**Loyalty**

**Moderation**

**Modesty**

**Orderliness**

**Patience**

**Peacefulness**

**Perseverance**

**Purposefulness**

**Reliability**

**Respect**

**Responsibility**

**Self-discipline**

**Service**

**Tact**

**Thankfulness**

**Tolerance**

**Trust**

**Trustworthiness**

**Truthfulness**

**Understanding**

**Unity**



# SCHOOL CURRICULUM

INDEPENDENT ASSESSMENTS (Botswana Examinations Council and Cambridge International)

## **BOTSWANA EXAMINATIONS COUNCIL (BEC) PSLE**

We register Standard 7 learners for PSLE from 2024 onwards. PSLE is an examination written by primary schools in Botswana and is marked externally by BEC appointed markers.

## **CAMBRIDGE PRIMARY CHECKPOINT**

When the pupils are deemed by staff to have sufficient readiness they will be registered to write the Cambridge Primary Check Point examination in Standard 7. This will be gradually phased in, to give children without prior experience in Cambridge schools time to be well prepared. Cambridge skills are built up from Standard 1 in established Cambridge Registered schools and even from Pre-school, where the campus has Pre-School & Reception classes. This examination is marked by Cambridge appointed markers. It is not a formal examination with a certificate, as is the case with PSLE, but a progress assessment. The school and each child is given a detailed report on strengths and areas where improvement is needed. It is the first step on the way to more formal Cambridge Examinations written in Cambridge Registered Secondary Schools.

## **INTERNAL ASSESSMENTS**

All pupils are assessed at the end of each Term and annually to determine progress and to allow teachers to plan for future learning. Regent Hill International Schools End of Term Reports on pupil's progress are issued through the EDANA system. (Parents will be briefed on how the EDANA System works) For parents who do not have the technology capable of downloading the app alternatives will be provided, including hard copy reports.

## **END OF TERM PARENT/TEACHER CONSULTATIONS**

Parent/Teacher consultation days are held prior to the opening date for the next term. For more in-depth and sensitive consultations, a private appointment can be made.

## **ORGANISATION OF CLASSES**

It is the policy of the Board of Directors that, as far as possible, children should be taught in single year group classes with an average class of 25.



# VALUES & DISCIPLINE



## HOMEWORK

Regent Hill International School sees a value in children engaging in homework as a means of revising work done, and checking for understanding and involving parents in their children's studies and in the development of good work habits.

Parents are requested to sign their child's homework notebooks and are welcome to write comments as feedback to the teacher, particularly if the child had a problem beyond their control for completing the homework or found it too challenging to complete.

**'Three legs are essential for best results; Teacher, Parent/Guardian and Child'**



## DISCIPLINE

Regent Hill International Primary School provides a good environment for your child to learn. The school operates a policy of positive discipline and behaviour management based around rules, rewards and consequences. It is the school's policy that discipline should be based on respect for self, others and respect for property. In those cases where a child has transgressed the school rules, there is a graded set of consequences. In any case involving a serious breach of rules, parents will be involved either by receiving a written report from school or by being invited to come to school to consult on how best to find a positive solution to the matter. Partnership between the home and school is key in maintaining effective school discipline. We have very high expectations of good behaviour from all our pupils. Corporal punishment is strictly forbidden at all Regent schools.

## ANTI-BULLYING

At Regent Hill International School bullying is not tolerated and reported incidents are taken seriously and thoroughly investigated and dealt with, at times with professional specialist guidance, to assist with positive outcomes leading from consultations, in the best interests of the children involved.



## **PARTNERSHIP WITH PARENTS**

The school believes in a strong partnership with parents through the Parent Teacher Association. (PTA) and other individual consultations. At all times positive solutions will be sought, based on in-depth consultations that yield important information about sometimes confidential factors involved that need to be handled with sensitivity.

## **DRUGS EDUCATION POLICY**

Regent Hill International Primary School is a caring and responsible school, with child centred activities. The staff at the school strive to respond to personal, emotional, social and educational needs of pupils through interaction with them in the classrooms and beyond. Guidance and counselling sessions are conducted mainly in Upper Primary to educate learners on the dangers of drugs and other harmful substances. It is not the school's intention to sensationalize or dramatize the drugs situation, or to encourage curiosity amongst pupils. A drugs education programme is provided which is deemed by staff, in consultation with authorities, to be appropriate to the experience of the children in Regent Hill International Primary School.

## **ATTENDANCE**

We recognize and stress the importance of the teaching and learning within the classroom. Regular attendance and your child's progress go hand in hand. Children should be in school at all times unless prohibited by illness, medical appointments or urgent family matters. If a student is absent for three or more consecutive weeks (21 days) without any arrangement agreed to with school management other than medical the student shall be cancelled in the register and considered withdrawn from the school.

## **ABSENCE FROM SCHOOL**

It would be appreciated if parent/guardian notifies the teacher if a child will not be able to attend. This also serves to ensure that children believed to have been transported to school actually have arrived. Strict daily registers are taken. Children are not permitted to leave the school property during school hours without consent from parents. This is a safety precaution. When returning to school the child should bring a note giving the reason why he/she was absent, or a verbal reason provided by parent/guardian for absence will also be accepted.

# EXTRA MURAL ACTIVITIES

## PHYSICAL EDUCATION/SPORTS

All Extra Mural Activities are included in the normal school programme, with no extra fees to be paid. The primary years are critical in laying the foundation of physical competency and positive attitude to physical activities. Children will experience a wide variety of activities which develop their skills through increasingly challenging situations. It is important that the Class Teacher and Physical Education teacher be notified in writing if a child has any medical or special condition.

All pupils must take part in regular P.E sessions, unless some medical condition prevents it. The school has a playground which encourages exercise through a programme of activities.

Fun, enjoyment and achievement should pervade all activities. Pupils will be allowed time to develop confidence, both as individuals and members of a group. Winning competitive sports and cultural activities, is rewarding, but the primary reason should not be lost in the process. Every child needs the health benefits that sports are included for in the school programme.

### Facilities

- o Playgrounds
- o Soccer field with green grass
- o Netball and Basketball court
- o Two Swimming pools, Big size for established swimmers, smaller shallow pool for beginners.
- o A variety of cultural activities, such as Chess, wildlife and Environment Club, Art, Music etc are offered for those with interest or talents.

### Trips per year & Activities

1. Educational (Standard 1,2,3,5,6)
2. Leisure (Standard 1,2,3,5,6)
3. Long Trip (Standard 4)
4. Educational, Long Trip & Leisure Trip (Standard 7)
5. Community Service Day (MCD) (1st & 2nd Term)



PRACTICAL LEARNING ON THE FIELD  
FOR BOTH UPPER AND LOWER CLASSES.

STANDARD 1-7. FIELD TRIPS.



# UNIFORM & APPEARANCE

## EXTRA CURRICULAR ACTIVITIES

Extra-curricular activities form a central part of the school life. At Regent Hill International Primary School we believe in a holistic approach to education and the school offers pupils with a variety of extra-curricular activities. A programme of activities will be sent home each term for parents' information and for them to guide children as to the best choices.

## SCHOOL UNIFORM



It is policy at Regent Hill International Primary School that every child must wear proper school uniform and parents' cooperation with regard to this policy would be much appreciated. The policy of pupils wearing uniform aims to:

- o Give children identity and help make them feel part of the school community.
- o Allow them to feel pride in themselves and their school.
- o Add to the overall ethos and atmosphere of the school.
- o Promote equality by ensuring that pupils do not feel different in the clothes that they wear.
- o Take the pressure off parents with regards to providing clothes each day for their children to wear.
- o Help with child Protection, Security and Health and Safety, as our pupils can easily be recognized and distinguished.
- o Promote the image of the school in public.
- o All items of clothing should be labelled with the name of the child.
- o There is a high-quality uniform shop based in the school. Open on Mondays, Wednesday and Fridays.

All pupils are expected to be smart and presentable at all times during school hours.

They shall be expected to attend school in the prescribed school uniform.

Where pupils are required to attend school wearing any other attire other than the prescribed daily school uniform (such as for PE Lessons, Extra Mural Activities and Civvies Days) parents will be advised via the class WhatsApp groups.

Pupils are expected, once a month to attend school in their civilian clothes (Civvies Days) Moderate dressing shall be required on such occasions.

## Boy's uniform

Navy blue trousers  
White embroiled shirt  
Blue Jersey  
Sun hat  
Navy blue embroiled tracksuit  
Navy blue shorts (P.E.)  
P.E. golf shirt (House colours will be introduced when available)  
White golf shirt  
Swimming costume

## Girl's uniform

Checked skirt  
White embroidered shirt  
Blue Jersey  
Sun hat  
Navy blue with embroidered logo tracksuit  
Navy blue shorts (PE)  
P.E. golf shirt (House colours will be introduced when available)  
White golf shirt  
Swimming costume

## P.E. UNIFORM (BOYS AND GIRLS)

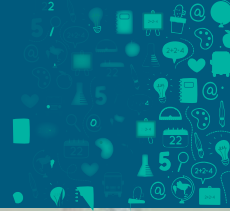
P.E uniform must be worn for all P.E sessions for health and safety reasons.

## APPEARANCE

- o Uniform must be worn in a tidy manner, i.e. shirts tucked into trousers/skirts etc.
- o No pierced jewellery of any kind is worn in school, apart from a keeper.
- o Children are permitted to wear a watch.
- o Wearing make-up of any kind, including nail varnish to school is not allowed.
- o Hair styles must be tidy, in natural colour and not interfere with vision.



# SCHOOL FEES



## 2026

### PRIMARY

Termly Fee

Annual Fee

Advance Fee

STANDARD 1 P 5 550 P16 650 P15 401

STANDARD 2-6 P 5 850 P17 550 P16 234

STANDARD 7 P 6 150 P18 450 P17 066

DEVELOPMENT LEVY P1,000

BOOK LEVY (ANNUAL)P1,050

REGISTRATION FEE:P200

### INSTALLMENT STARTING NOV 31 2025

STANDARD 1 P1 850 X 9 MONTHS

STANDARD 2 - 6 P1 950 X 9 MONTHS

STANDARD 7 P3 075 X 6 MONTHS

BLOCK 9-GABORONE

### SECONDARY

Termly Fee

Annual Fee

Advance Fee

Form 1 P12 540 P37 620 P34 799

Forms 2-4 P12 780 P38 340 P35 465

Form 5 P20 520 P41 040 P37 962

AS/A-Level P26 790 P53 580 P49 562

1st Child : 0% Discount

2nd Child : 10% Discount

3rd Child : 15% Discount

4th Child : 20% Discount

7.5%  
off

Advance Annual Fee

## SWIMMING POOL

## FOOTBALL PITCH

## PLAY AREA

## GARDEN

Bank : ABSA BANK

Account : Regent Hill Primary School

Account Number : 1538963

Branch : Gaborone Industrial

Branch Code: 29-03-67

Swift Code: BARCBWGX

BANKING INFO



# FEES ACCOUNT DETAILS

Standard 7	Amount	Date
<b>Full Payment</b>	<b>P18 450.00</b>	paid by 31st october 2025 (Whole Year)
		There is registration fee & invigulation fee to be paid
<b>Method 1</b>	<b>P6 150.00</b>	paid by 31st october 2025 (Whole Year) (Term 1)
	<b>P6 150.00</b>	paid by 31st December 2025 (Whole Year) (Term 2)
	<b>P6 150.00</b>	paid by 31st February 2025 (Whole Year) (Term 2)
<b>Method 2</b>	<b>P3 075.00</b>	paid by 30th November 2025 (Whole Year) (Term 2)
	<b>P3 075.00</b>	paid by 31st December2025 (Whole Year) (Term 2)
	<b>P3 075.00</b>	paid by 31st January 2025 (Whole Year) (Term 2)
	<b>P3 075.00</b>	paid by 28 February 2025 (Whole Year) (Term 2)
	<b>P3 075.00</b>	paid by 31st March 2025 (Whole Year) (Term 2)
	<b>P3 075.00</b>	paid by 3th April 2025 (Whole Year) (Term 2)

The name and the class of your child should be clearly stated on the deposit slip.  
If the original deposit slip is lost by parent/guardian and the name and standard of your child had not been provided on the copy of deposit slip sent to the Bursar, your account may not be credited with the payment.

Please deposit school fees in the School Account at

## Accounts Details

**Bank: ABSA BANK**

**Account name: Regent Hill Primary School**

**Account Number: 1538963**

**Branch: Gaborone Industrial**

**Branch Code: 290367**

**Swift Code: BARCBWGX**

# FEES DISCOUNT EATING PROGRAM



.

A one month notice in writing may be accepted if sufficient supporting written evidence as to the reason of transfer is provided with the transfer request.  
The registration fee and development levy are non-refundable. School fees may be refunded if they have been paid in advance, after consultation with Bursar.  
For all children transferring from any other Regent Hill Schools all paid up fees and levies are transferable.

## **MULTIPLE CHILD DISCOUNTS**

Regent Hill International School understands the financial pressure involved in supporting more than one child, and we are pleased to offer the following discounts for parents with several children enrolled in Regent Hill International Primary School

(Terms and Conditions may apply, please see the bursar if it applies to your situation):

1st/oldest child: No discount 100% of fees (In cases of twins a special agreement will need to be made)

2nd child: 10% discount 90% of fees

3rd child: 15% discount 85% of fees

4th child: 20% discount 80% of fees

**WE REQUIRE A FULL TERM'S NOTICE IN WRITING BEFORE YOUR CHILD IS CONSIDERED WITHDRAWN FROM THE SCHOOL**

## **HEALTH PROMOTION AT SCHOOL**

Regent Hill International Primary School emphasizes healthy eating by offering freshly prepared, balanced meals from our on-site kitchen every day. (OPTIONAL WITH A FEE)

## **FURTHER INFORMATION**

The Management of Regent Hill International Primary School realizes that information given in this prospectus is limited and parents are very welcome to make arrangements to visit our campus. Parents are also encouraged to visit our website.

Web: [www.rhis.ac.bw](http://www.rhis.ac.bw)

# CONTACT INFORMATION

## CONTACTS

Orange 78142587

Mascom 71351734

Bemobile 73613728

Wireless landline 5750085

E mail enquiry.mochudi@rhis.ac.bw

Physical Address: Plot 3021, Boseja Ward Mochudi

**NOTE: IF YOU ARE SATISFIED WITH THE TERMS AND CONDITIONS OF THIS PROSPECTUS, YOU MAY COMPLETE THE APPLICATION FORM FOR ADMISSION AT REGENT HILL INTERNATIONAL PRIMARY SCHOOL AND APPEND YOUR SIGNATURE.**

**WELCOME TO REGENT HILL INTERNATIONAL PRIMARY SCHOOL MOCHUDI CAMPUS!**



"Exploring in action". Highlight from our educational trips:

1. BTV/Radio Studios. Valuable insight into the world of broadcasting.
2. Music concert : All primary levels showcasing their musical ability
3. Bahurutshe cultural village: Learning the values and lifestyle of Batswana. Cultural practices